

MONTHLY MEMBERSHIP PROGRESS REPORT

LOCATION INDIA

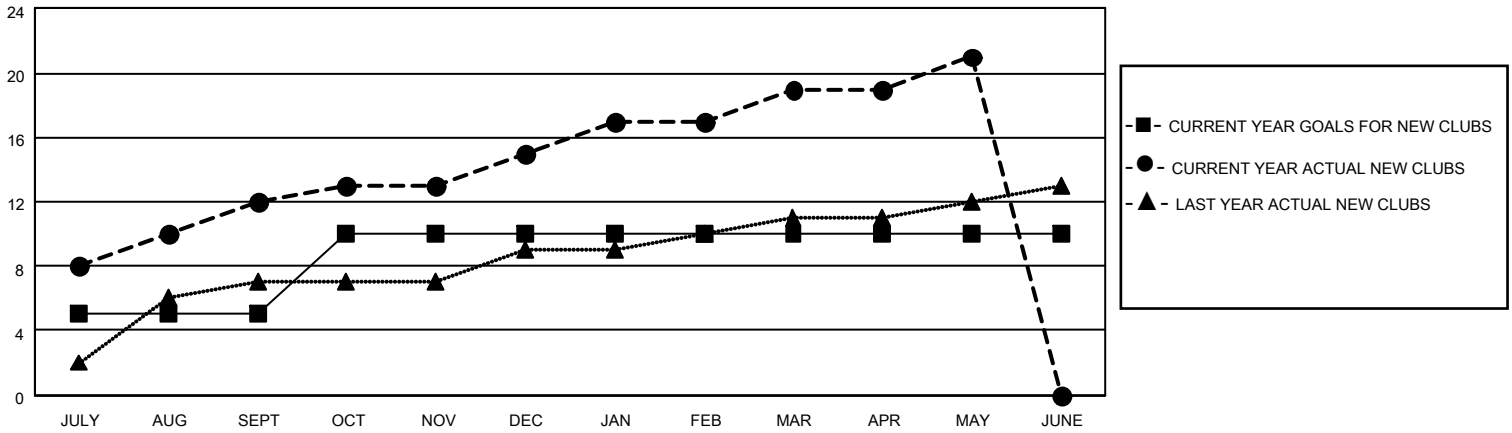
District 324 H

Results as of: 5/31/2023

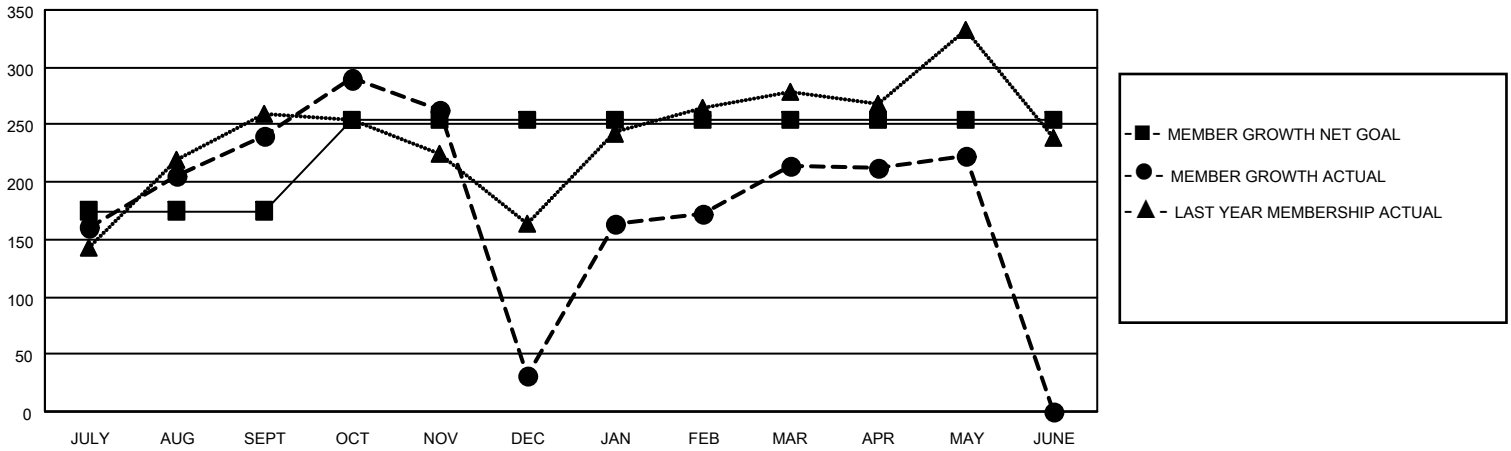
Clubs			
RESULTS FOR 2022-2023			
QUARTER	NEW CLUB GOAL	NEW CLUBS	DROPPED CLUBS
JULY/AUG/SEPT	5	12	1
OCT/NOV/DEC	5	3	6
JAN/FEB/MAR	0	4	1
APR/MAY/JUNE	0	2	0

Members			
RESULTS FOR 2022-2023			
QUARTER	MEMBER GROWTH NET GOAL	MEMBER GROWTH ACTUAL	DROPPED MEMBERS ACTUAL (including transfers)
JULY/AUG/SEPT	175	391	139
OCT/NOV/DEC	80	119	322
JAN/FEB/MAR	0	273	50
APR/MAY/JUNE	0	62	53

GOALS AND ACTUAL NEW CLUBS CUMULATIVE



GOALS AND ACTUAL MEMBERS CUMULATIVE



DROPPED CLUBS: 8

95 CLUBS OF 111 ADDED 1 OR MORE NEW MEMBERS

GENDER DISTRIBUTION

MALE	2,920 (84.56%)
FEMALE	532 (15.41%)
NON BINARY	1 (0.03%)
PREFER NOT TO ANSWER	0 (0.00%)

DROPPED MEMBERS

[CLICK HERE FOR CUMULATIVE MEMBERSHIP DATA](#)

DECEASED	13
CLUB CANCELLED	172
OTHER	379
TOTAL	564

TOTAL FAMILY UNIT MEMBERS	899
FAMILY MEMBERS PAYING HALF DUES	539